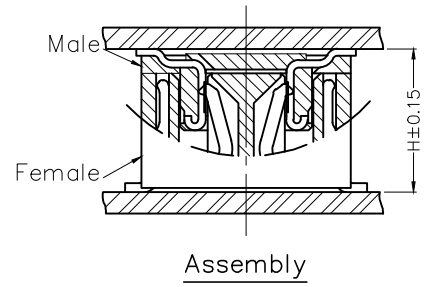
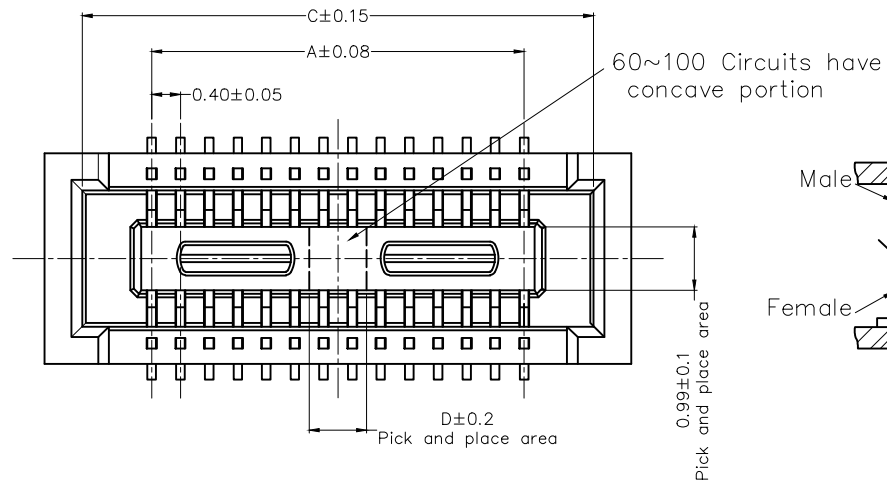


1 2 3 4 5 6 7 8

REV	LOCATIONS	DESCRIPTION	DATE	REVISER	APPD
1	△	Change packaging quantity	23/Dec/25	Hejianpeng	LEO

A
B
C
D
E
F

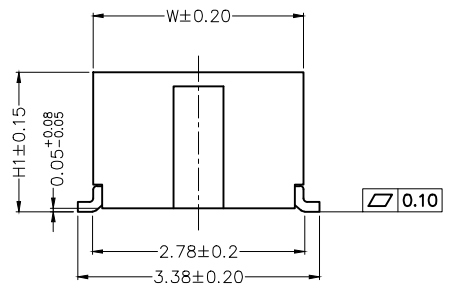
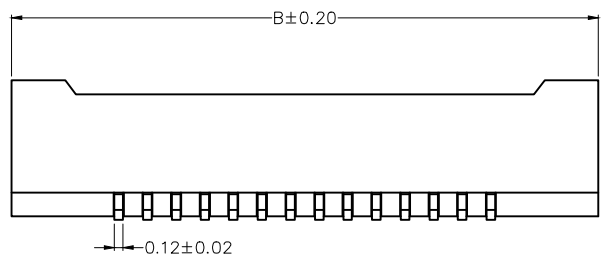
A
B
C
D
E
F



SPECIFICATIONS

Electrical
 Current Rating: 0.3A AC(rms)/DC
 Voltage Rating: 30V AC(rms)/DC
 Contact Resistance: 90 mΩ Max.
 Insulation Resistance: 50 MΩ Min.
 Withstanding Voltage: 100V AC r.m.s
 Temperature Range-Operating: -35°C~+85°C

Material
 Housing: Thermoplastic (UL 94V-0), Black
 Contact: Copper alloy/ 0.05μm gold plated on contact area and 0.025μm gold plated on tails area

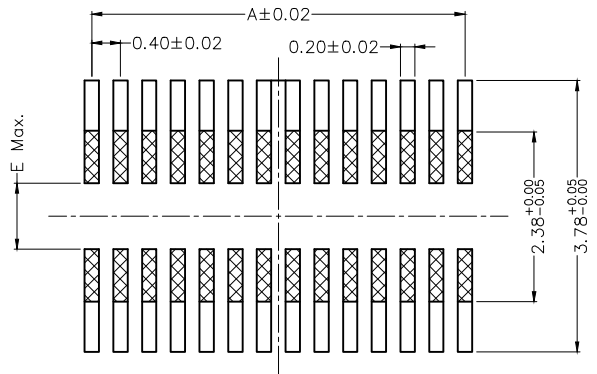


Dimensions(mm)			
Height H	H1	W	E
1.50	1.45	2.88	1.50
2.00	1.95	2.94	0.92
2.50	2.40	2.94	0.92
3.00	2.90	2.94	0.92
3.50	3.40	2.94	0.92
4.00	3.90	2.94	0.92

Ordering Information

FBB 040 10 - F XX S 1 02 3 BK M HXX
 1 2 3 4 5 6 7 8 9 10 11 12

1 Category FBB-Board to Board	2 Series Number 040-Pitch 0.4mm	3 Distinction No. 10	4 Type F-Female	5 Circuits XX	6 Entry Angle S-180° Vertical	7 Plating 1-Gold plated
8 Thickness of Plating 02-0.05μm	9 Material-Resin 3-LCP	10 Color-Resin BK-Black	11 Packaging M-Reel	12 H height H14-H1=1.45mm H29-H1=2.90mm H19-H1=1.95mm H34-H1=3.40mm H24-H1=2.40mm H39-H1=3.90mm		



Recommended P.C.Board Layout
 General tolerances: ±0.05

THIRD ANGLE PROJECTION	GENERAL TOLERANCES (UNLESS SPECIFIED)		APPROVE BY LEO	DATE 25/AUG/23	PART NO. FBB04010-FXSS1023BKM HXX	ITEM NO. FBB04010	
	X. ±0.30	X.' ±5'	CHECKED BY GISELLE	DATE 25/AUG/23	TITLE Board to Board Pitch 0.4mm 180° Vertical (SMT)		
DESIGN UNITS METRIC (mm)	X.X ±0.20	X.X' ±2'	DRAWN BY MATT	DATE 25/AUG/23	THIS DRAWING CONTAINS INFORMATION THAT IS PROPRIETARY TO TXGA INDUSTRIAL ELECTRONICS(S.Z)CO.,LTD AND SHOULD NOT BE USED WITHOUT WRITTEN PERMISSION		
SCALE 5:1	SIZE A4	X.XX ±0.15 X.XXX ±0.5'					

1 2 3 4 5 6 7 8

1 2 3 4 5 6 7 8

REV	LOCATIONS	DESCRIPTION	DATE	REVISER	APPD

A

B

C

D

E

F

A

B



C

D

E

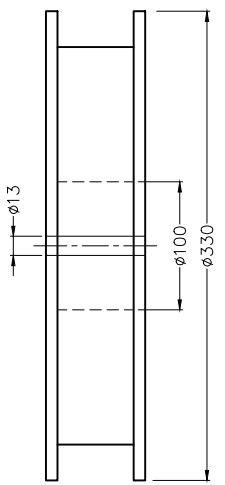
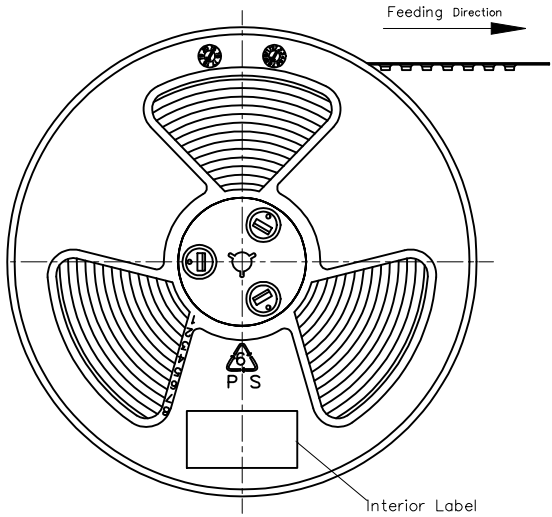
F

Circuits (n)	Part No.	Dimensions(mm)			
		A	B	C	D
10	FBB04010-F10S1023BKMHXX	1.60	4.60	3.55	1.00
20	FBB04010-F20S1023BKMHXX	3.60	6.60	5.55	1.00
24	FBB04010-F24S1023BKMHXX	4.40	7.40	6.35	1.20
30	FBB04010-F30S1023BKMHXX	5.60	8.60	7.55	1.50
34	FBB04010-F34S1023BKMHXX	6.40	9.40	8.35	1.50
40	FBB04010-F40S1023BKMHXX	7.60	10.60	9.55	3.20
50	FBB04010-F50S1023BKMHXX	9.60	12.60	11.55	3.20
60	FBB04010-F60S1023BKMHXX	11.60	14.60	13.55	3.20
70	FBB04010-F70S1023BKMHXX	13.60	16.60	15.55	3.20
80	FBB04010-F80S1023BKMHXX	15.60	18.60	17.55	3.20
90	FBB04010-F90S1023BKMHXX	17.60	20.60	19.55	3.20
100	FBB04010-F100S1023BKMHXX	19.60	22.60	21.55	3.20
120	FBB04010-F120S1023BKMHXX	23.60	26.60	25.55	3.20

 THIRD ANGLE PROJECTION	GENERAL TOLERANCES (UNLESS SPECIFIED)		APPROVE BY LEO	DATE 25/AUG/23	PART NO. FBB04010-FXSS1023BKMHXX	ITEM NO. FBB04010	 Building Technology Cornerstone
	DESIGN UNITS METRIC (mm)	X. ±0.30 X.X ±0.20 X.XX ±0.15 X.XXX ±0.10	X.' ±5' X.X' ±2' X.XX' ±1' X.XXX' ±0.5'	CHECKED BY GISELLE	DATE 25/AUG/23	TITLE Board to Board Pitch 0.4mm 180° Vertical (SMT)	
SCALE 5:1	SIZE A4	DRAWN BY MATT		DATE 25/AUG/23	THIS DRAWING CONTAINS INFORMATION THAT IS PROPRIETARY TO TXGA INDUSTRIAL ELECTRONICS(S.Z)CO.,LTD AND SHOULD NOT BE USED WITHOUT WRITTEN PERMISSION		

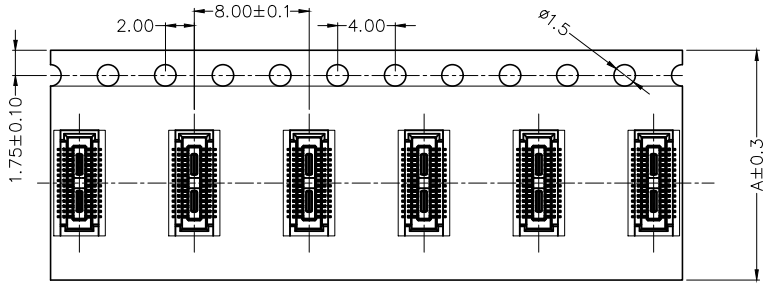
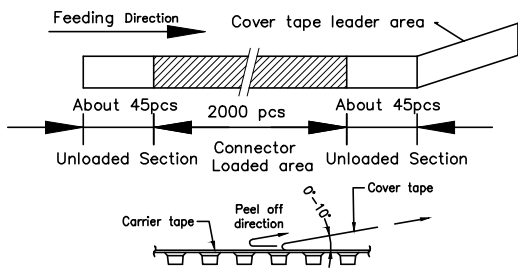
1 2 3 4 5 6 7 8

REV	LOCATIONS	DESCRIPTION	DATE	REVISER	APPD

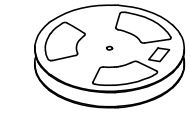


- Note:
- 10 sprocket hole cumulative tolerance ± 0.2
 - Carrier camber is within 1mm in 100mm
 - Material: Transparent Conductive polystyrene Alloy 100% recyclable
 - All dimensions meet EIA-481-3 requirements
 - Component load per 13" reel: pcs

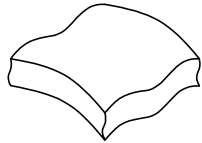
Circuits (n)	Dimensions(mm)	
	A	C
10-24	16.0	-
30-60	24.0	-
70-80	32.0	28.4
90-120	44.0	40.4



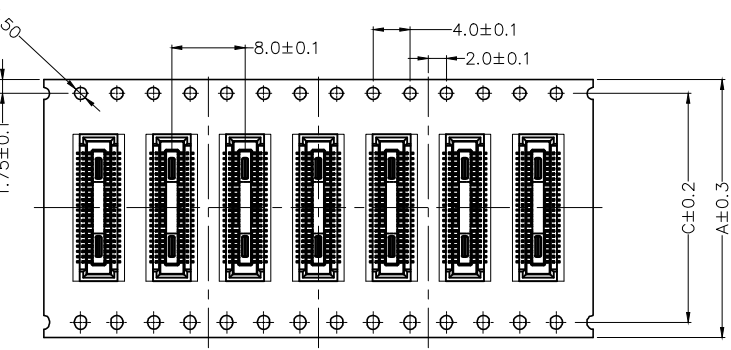
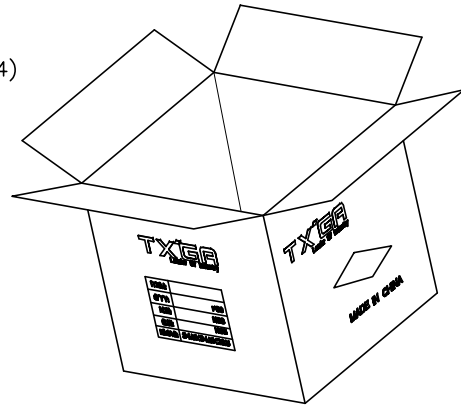
- 5000 pcs/Reel(H:1.45)
- 4000 pcs/Reel(H:1.95)
- 3000 pcs/Reel(H:2.4~3.4)
- 2000 pcs/Reel(H:3.9)



PE Bag



Drying agent/pcs



<p>THIRD ANGLE PROJECTION</p>	GENERAL TOLERANCES (UNLESS SPECIFIED)		APPROVE BY	DATE	PART NO.	ITEM NO.	<p>Building Technology Cornerstone</p>		
	X. ±0.30	X.' ±5'	LEO	25/AUG/23	FBB04010-FXXS1023BKMHX	FBB04010			
	DESIGN UNITS METRIC (mm)	X.X ±0.20	X.X' ±2'	CHECKED BY	DATE	TITLE		REV 1	SHEET NO. 3/3
	SCALE	SIZE	X.XX ±0.15	GISELLE	25/AUG/23	Board to Board Pitch 0.4mm 180° Vertical (SMT)			
5:1	A4	X.XXX ±0.10	DRAWN BY	DATE	THIS DRAWING CONTAINS INFORMATION THAT IS PROPRIETARY TO TXGA INDUSTRIAL ELECTRONICS(S.Z)CO.,LTD AND SHOULD NOT BE USED WITHOUT WRITTEN PERMISSION				
		X.XXX' ±0.5'	MATT	25/AUG/23					